

HP Device Manager 4.7

Installation and Update Guide



Table of contents

Overview.....	3
HPDM Server preparation.....	3
FTP server configuration.....	3
Windows Firewall settings.....	3
Firewall settings for FTP.....	3
Firewall settings for HP Device Manager.....	4
Installing HPDM.....	4
Running the installation file.....	4
HPDM configuration.....	6
Creating a new database.....	7
Updating HPDM.....	10
Running the installation file to update HPDM.....	10
HPDM configuration during an update.....	12
Using an existing database.....	14
Migrate an existing database to a new location.....	17
HPDM tools.....	19
Configuring the HPDM Server.....	19
Accessing the Server configuration file.....	19
Thread settings.....	19
Port settings.....	20
Poll settings.....	20
Task settings.....	20
SSL settings.....	20
Log settings.....	21
Cache settings.....	21
Configuring the HPDM Gateway.....	22
HPDM Gateway parameters.....	22
HPDM Gateway tray icon colors.....	22
HPDM Gateway tray icon menu.....	22

Configuring DHCP tags.....	23
Configuring the HPDM Agent.....	23
Configuring HP WES/XPe/CE clients	23
Configuring HP ThinPro and Debian clients.....	24
HPDM Agent parameters.....	25
Appendix A — Updating your HPDM version.....	26
Updating HPDM to the latest major version.....	26
Updating HPDM to the latest SP	26
For more information	27

Overview

This document discusses the installation of HP Device Manager (HPDM) and the usage of HPDM tools in a Proof of Concept. Production installation might differ based on a number of parameters, including, but not limited to, the number of remote sites, the number of devices, LAN and WAN links, network configuration, and such. Contact your device technical consultant for more details.

HPDM consists of the following components:

- **HPDM Console**—The graphical application used by administrators to access the management system.
- **HPDM Server**—The central server, which consolidates and controls all management activities.
- **HPDM Gateway**—The link between HPDM Agents and the HPDM Server.
- **Master Repository Controller**—The content manager in the Master Repository, which synchronizes that content to other repositories as requested by the HPDM Server.
- **HPDM Agent**—Software installed on the client to enable device management.

The HPDM Console, HPDM Server, HPDM Gateway, and Master Repository Controller can be installed on the same machine or on separate machines.

HPDM Server preparation

For this setup, you need either Windows Server 2003, Windows Server 2008, or Windows Server 2012 running on either a physical or virtual machine. Allocate at least 10 GB for the operating system and the HPDM files. Full server recommendations are available in the *HP Device Manager 4.7 Administrator Guide*.

This paper assumes that the HPDM Server will use a standard installation without any additional services running.

This chapter focuses on the post-installation steps of installing HPDM onto Windows Server 2008 R2. The example assume a complete HPDM installation has already been performed on the HPDM Server and that a user account for the FTP transactions has already been created.

FTP server configuration

For details about FTP server configuration, see the *HP Device Manager 4.7 FTP Server Configuration* white paper.

Windows Firewall settings

In Windows Server 2008 R2, the built-in firewall service helps secure your server from network threats and is enabled by default. If you use the built-in Windows Firewall, you need to configure your settings so that the HPDM and FTP traffic can pass through the firewall. Note that you need to be logged on as Administrator or as a user that has administrator privileges to configure the firewall. If not logged on as Administrator, be sure to click **Start > All Programs > Accessories > Command Prompt**, and then right-click **Command Prompt** and select **Run as Administrator**. This is required because User Account Control (UAC) in the Windows Server 2008 R2 operating system prevents non-Administrator account access to the firewall settings.

Firewall settings for FTP

You must configure an exception for both the control channel (port 21) and the port range for the passive data channel. This can be done in the GUI for the Windows Firewall, but it is easier to add these rules from the command line.

To configure the Windows Firewall setting for FTP using the command line:

1. Click **Start > All Programs > Accessories > Command Prompt**. If not logged on as Administrator, be sure to right-click **Command Prompt** and select **Run as Administrator**.
2. To add an inbound rule for the command channel and to allow connections to port 21, enter the following command and then press **Enter**:

```
netsh advfirewall firewall add rule name="FTP (non-SSL)" action=allow protocol=TCP dir=in localport=21
```

- To disable stateful FTP filtering so that Windows Firewall does not block FTP traffic to the passive port range, enter the following command and then press **Enter**:

```
netsh advfirewall set global StatefulFtp disable
```

Firewall settings for HP Device Manager

The basic ports used by HPDM for management traffic between the HPDM Server, HPDM Gateway, and HPDM Agent are located in the range of 40000–40009 and 40012.

To configure the necessary exceptions:

- Click **Start > All Programs > Accessories > Command Prompt**. If not logged on as Administrator, be sure to right-click **Command Prompt** and select **Run as Administrator**.

- To add an inbound rule to allow UDP traffic on port 40000, enter the following command and then press **Enter**:

```
netsh advfirewall firewall add rule name="HP Device Manager UDP IN"
action=allow protocol=UDP dir=in localport=40000
```

- To add an outbound rule to allow UDP traffic on port 40000, enter the following command and then press **Enter**:

```
netsh advfirewall firewall add rule name="HP Device Manager UDP OUT"
action=allow protocol=UDP dir=out localport=40000
```

- To add an inbound rule to allow TCP traffic on ports 40001–40009 and 40012, enter the following command and then press **Enter**:

```
netsh advfirewall firewall add rule name="HP Device Manager TCP IN"
action=allow protocol=TCP dir=in localport=40001-40009,40012
```

- To add an outbound rule to allow TCP traffic on ports 40001–40009 and 40012, enter the following command and then press **Enter**:

```
netsh advfirewall firewall add rule name="HP Device Manager TCP OUT"
action=allow protocol=TCP dir=out localport=40001-40009,40012
```

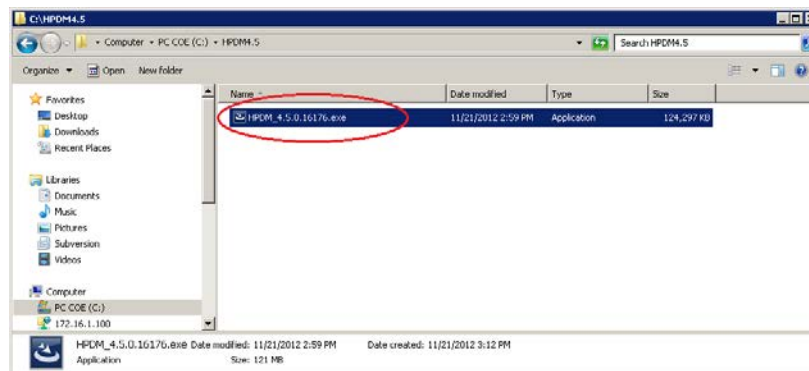
After following these steps, the HPDM Server and HPDM Agents can connect to and transfer files to and from the FTP site created for the repository. Also, the ports used for HPDM traffic are opened up on the Windows Firewall. Other ports might be needed for other specific tasks. See the *HP Device Manager 4.7 Administrator Guide* for a complete list of ports used by HPDM.

Installing HPDM

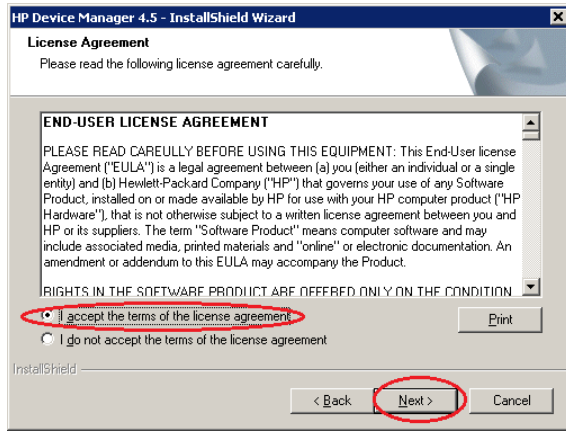
Before installing HPDM, copy the installation files to the server and see [HPDM Server preparation](#). If you already have an older version of HPDM installed, see [Upgrading HPDM](#).

Running the installation file

- Open the HPDM folder and double-click the HPDM setup file. If it asks to Extract or Run, select **Run**.



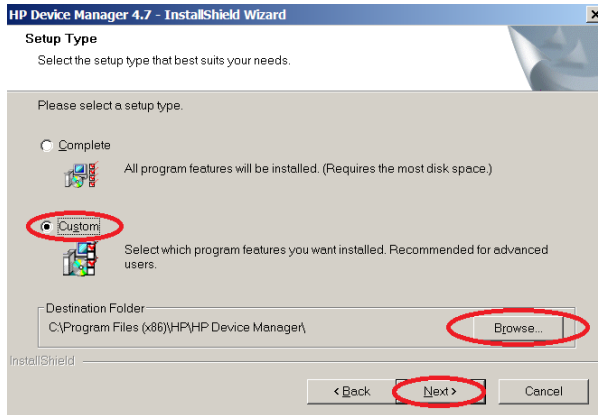
- Click **Next**.
- Accept the license agreement and click **Next**.



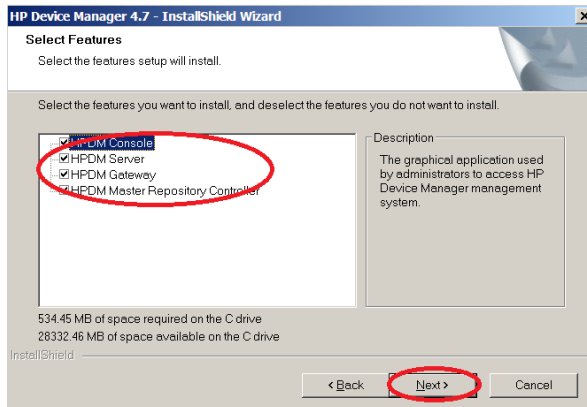
4. Click **Yes**.
 5. Select a setup type:
 - **Complete**—All components are installed with their default configurations.
 - **Custom**—Select the components to install and specify the configuration of each one.
- Select the desired setup type, change the Destination Folder if desired, and then click **Next**.

Note

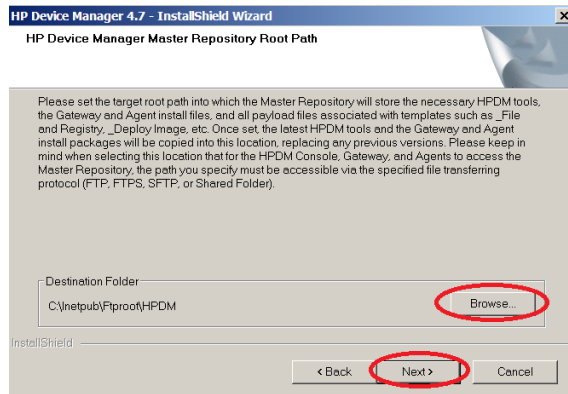
This example uses the Custom setup.



6. Make sure all the HPDM components are checked. Click **Next**.



7. Accept the default root path for the Master Repository, or click **Browse** and navigate to a specific location. Click **Next**.

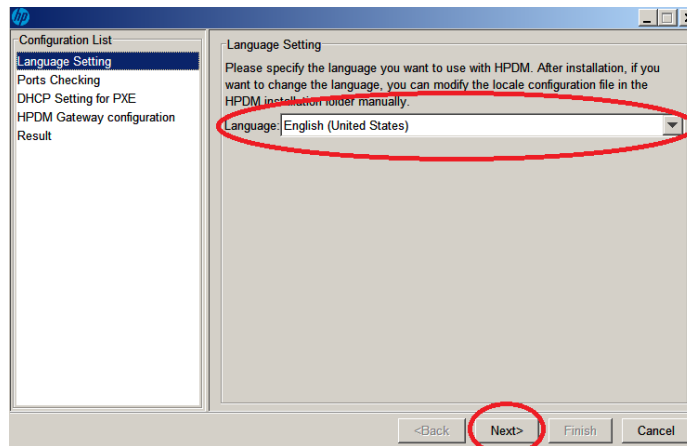


8. Click **Install**.

A progress bar is displayed. When it completes, HPDM is installed.

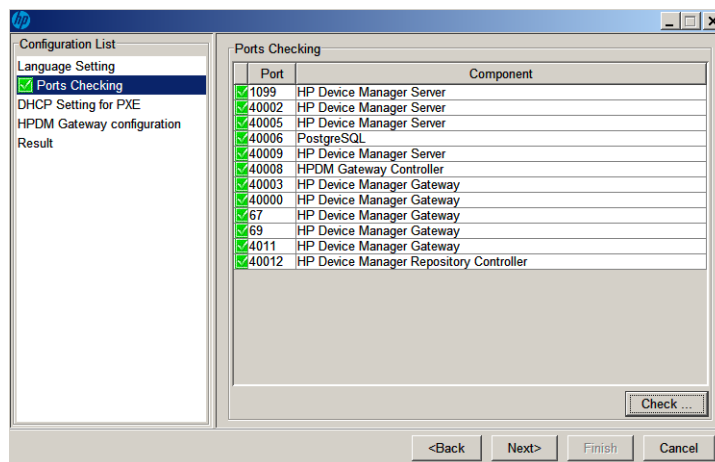
HPDM configuration

1. An HPDM Configuration Wizard appears after HPDM is installed. Select your language, and then click **Next**.

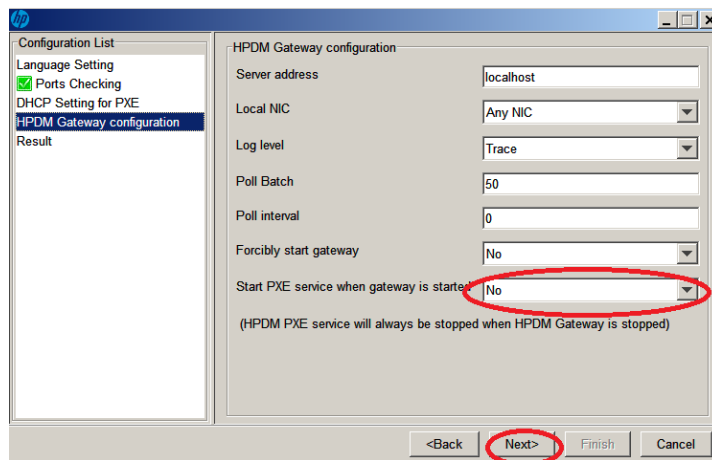


2. Click **Check** to check ports, and then click **Next**.

3. Be sure that **DHCP server not located on this machine** is selected, and click **Next**.



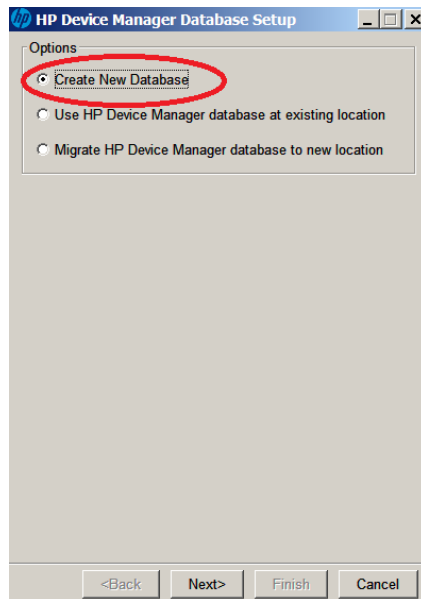
- Under **Start PXE service when gateway is started**, select **No**, and then click **Next**.



- Click **Execute**.
- Click **Finish**.

Creating a new database

- After HPDM is configured, an HP Device Manager Database Setup dialog appears. Select **Create New Database**, and then click **Next**.



Note

You must create a new database the first time you install HPDM.

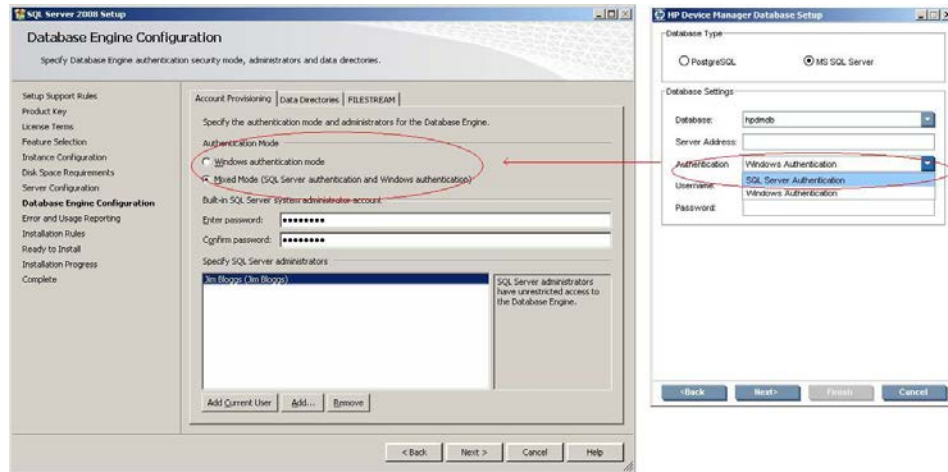
HP Device Manager supports two database types:

- **PostgreSQL**—If you choose PostgreSQL, there is no need to do any other database configuration because it is embedded in HPDM
- **MS SQL Server**—If you choose MS SQL, you must first create an MS SQL Server database for you to connect to (see MS SQL Server documentation).

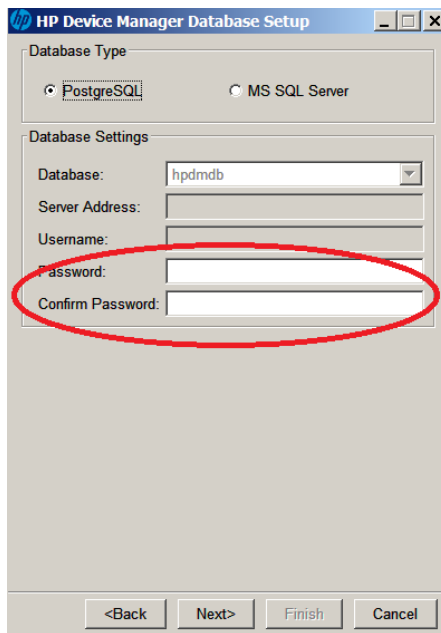
Note

If you choose MS SQL Server as your HPDM database, the authentication type in the HP Device Manager Database Setup dialog must correspond to the MS SQL Server configuration, and you must be authorized to create the database. Example as follows:

- A. If you choose Windows Authentication during the database engine configuration, you must choose Window Authentication when configuring the HPDM database.
- B. If you choose mixed mode during the database engine configuration, you can choose either Window Authentication or SQL Server Authentication when configuring the HPDM database.



- 2. Choose your desired database type, and then click **Next**.
 - A. If you choose PostgreSQL, you must set a password.



- B. If you choose MS SQL Server, you need to manually input the database information

HP Device Manager Database Setup

Database Type

PostgreSQL MS SQL Server

Database Settings

Database: hpdmdb

Server Address:

Authentication: SQL Server Authentication

Username:

Password:

<Back Next> Finish Cancel

3. A process bar will appear. When the database creation is finished, enter and confirm the password for the root Administrator account, and then click **Finish**.

HP Device Manager Database Setup

User Settings

Set the administrator's password for Device Management Server

Username: root

Password:

Confirm Password:

<Back Next> Finish Cancel

4. Click **OK**. The database was created successfully.
5. After the database installation is finished, a completion dialog appears. Click **Finish**.

HP Device Manager 4.5 - InstallShield Wizard

InstallShield Wizard Complete

The InstallShield Wizard has successfully installed HP Device Manager 4.5. Click Finish to exit the wizard.

< Back Finish Cancel

You have completed the installation of HPDM.

Updating HPDM

If you already have an older version of HPDM installed, you can use the new HPDM installation file to update it. Before updating HPDM, copy the installation files to the HPDM Server and see [HPDM Server preparation](#).

Note

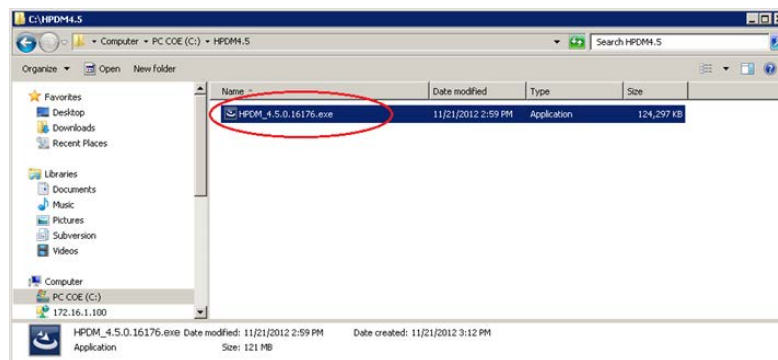
You do not need to install all Service Packs (SPs) when updating HPDM to the latest major version. For example, if your current HPDM version is 4.6 SP1, you can update it to 4.7 without installing 4.6 SP2 or any other SPs.

Be sure to make a backup before upgrading HPDM in case there is an installation error and you need to restore the previous version. For more details, see the *HP Device Manager 4.7 Administrator Guide*.

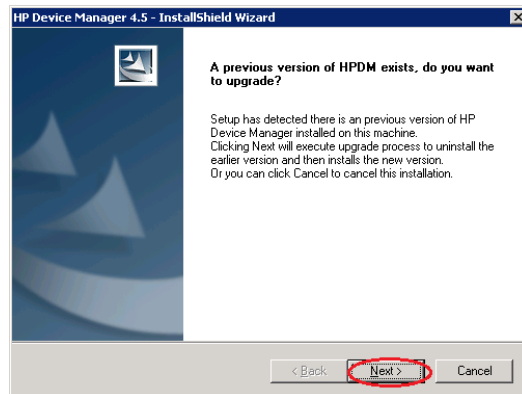
For more information, see [Appendix A — Updating your HPDM version](#).

Running the installation file to update HPDM

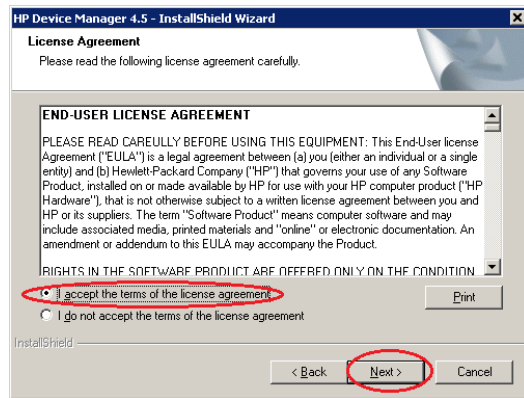
1. Open the HPDM folder and double-click the HPDM setup file. If it asks to Extract or Run, select **Run**.



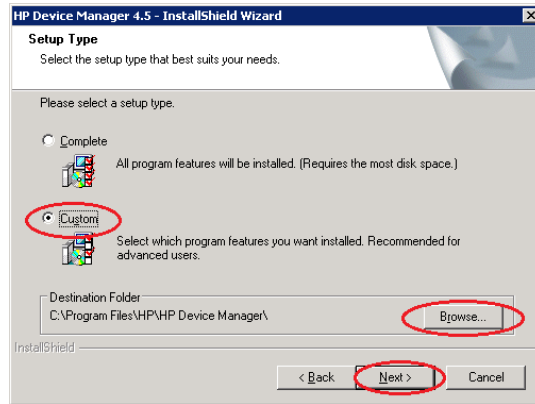
2. When a prompt to update HPDM appears, click **Next**.



3. Click **Yes**.
4. Click **Next**.
5. Accept the license agreement, and then click **Next**.



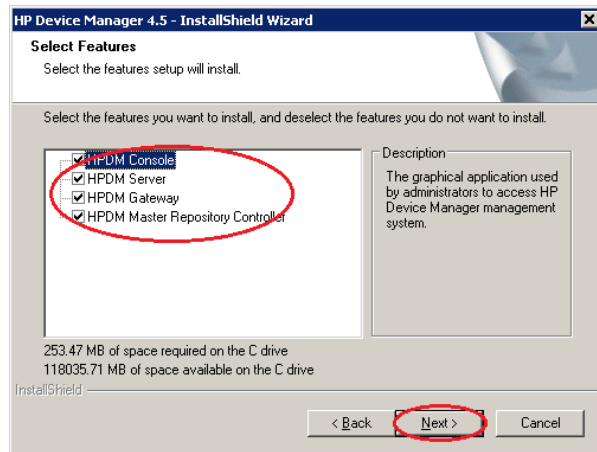
6. Click **Yes**.
7. Select the **Custom** setup, change the destination folder if desired, and then click **Next**.



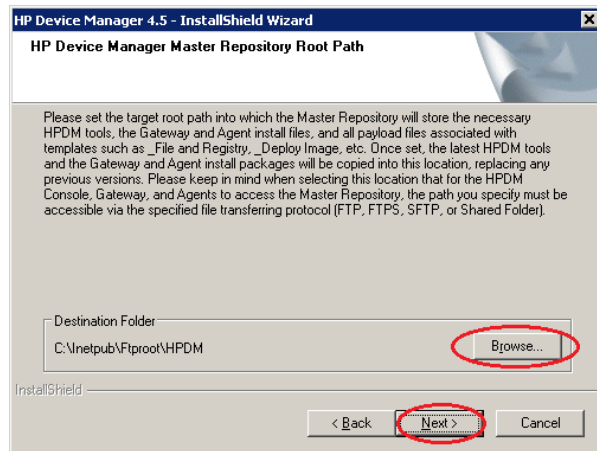
Note

You can either overwrite your current HPDM directory or create a new destination folder.

8. Make sure all HPDM components are checked. Click **Next**.



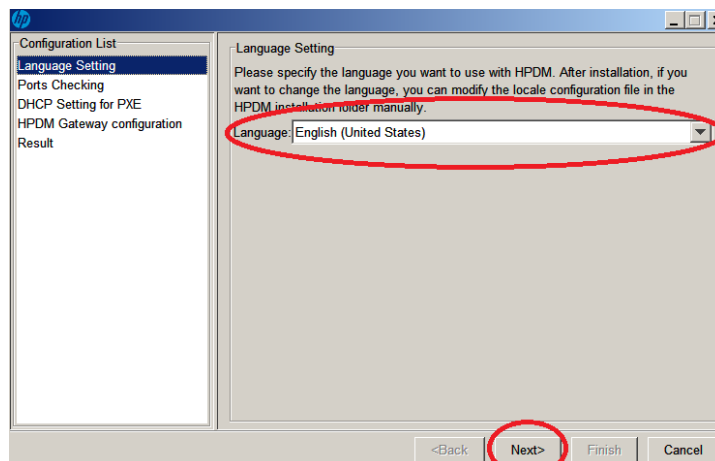
9. Accept the default root path for the Master Repository, or click **Browse** and navigate to a specific location. Click **Next**.



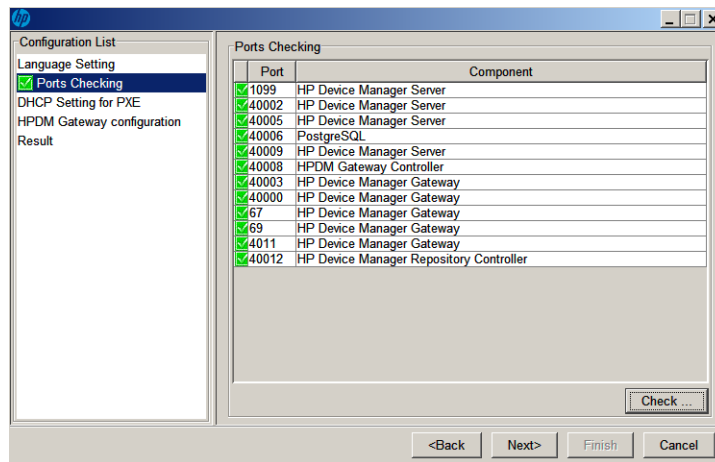
10. Click **Install**. HPDM is now installed.

HPDM configuration during an update

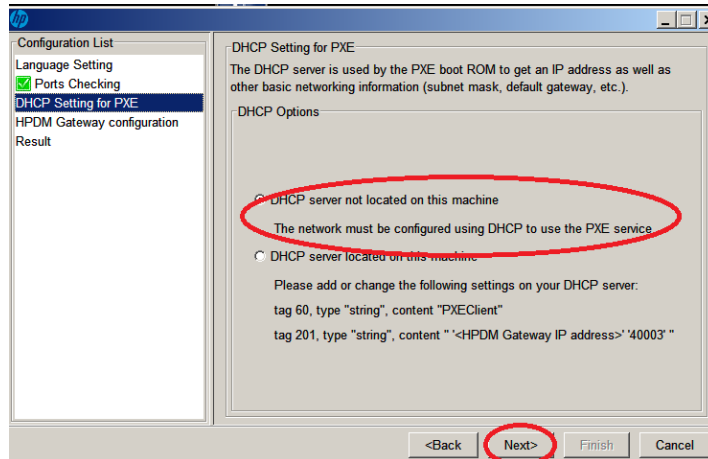
1. After the HPDM update is installed, an HPDM Configuration Wizard appears. Select your language, and then click **Next**.



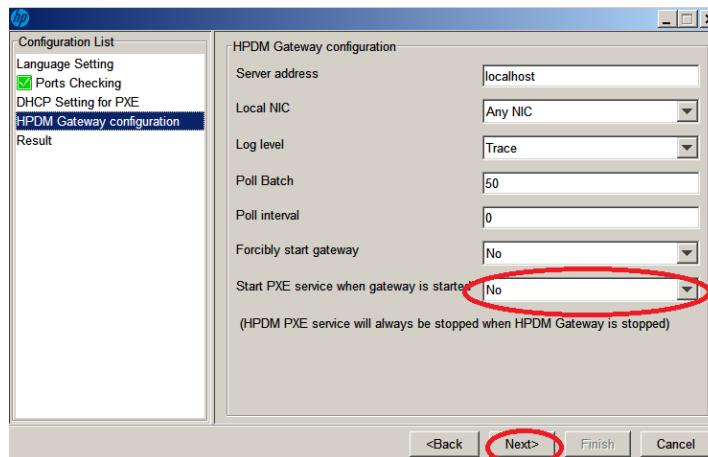
2. Click **Check** to check the ports, and then click **Next**.



3. Be sure that **DHCP server not located on this machine** is selected, and then click **Next**.



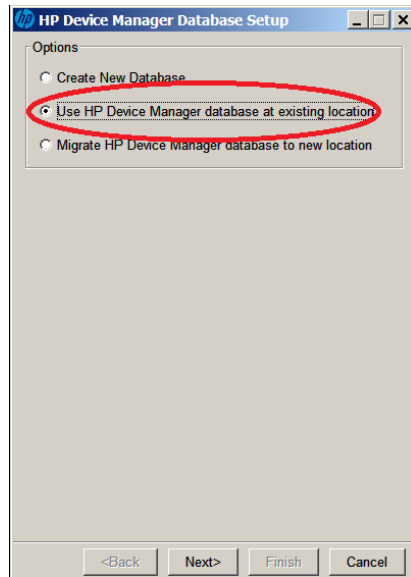
4. Under **Start PXE service when gateway**, select **No**, and then click **Next**.



5. Click **Execute**.
6. Click **Finish**.

Using an existing database

1. After the HPDM update is configured, an HP Device Manager Database Setup dialog opens. Select **Use HP Device Manager database at existing location**, then click **Next**.



Note

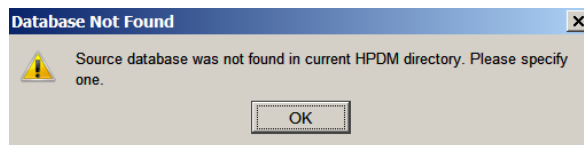
The option **Use HP Device Manager database at existing location** means that HPDM uses the existing database instead of creating a new one. For example, if you have HP Device Manager 4.6 and you want to update to 4.7, you can use the existing version 4.6 database.

If you want to create a new database, you can choose Create New Database (see [Creating a new database](#)).

If you want to migrate an existing database to a new location, you can choose Migrate HP Device Manager database to new location (see [Migrate an existing database to a new location](#)).

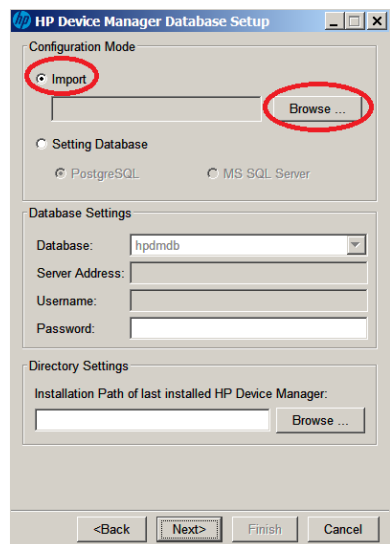
A processing dialog is displayed while a connection is made to the existing database. Then, a dialog appears notifying you that the connection was successful. HPDM is now upgraded.

2. If a dialog appears notifying you that there was a problem connection to the existing database, click **OK** to specify the database manually.

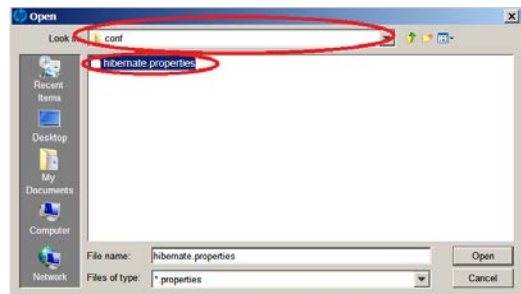


3. Select a configuration mode:
 - A. **Import**—You can import an existing database configuration file: for example, `hibernate.properties`.
 - B. **Setting Database**—You configure the database manually.

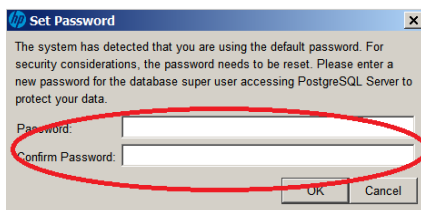
The following example uses the Import option. Select **Import**, and then click **Browse**.



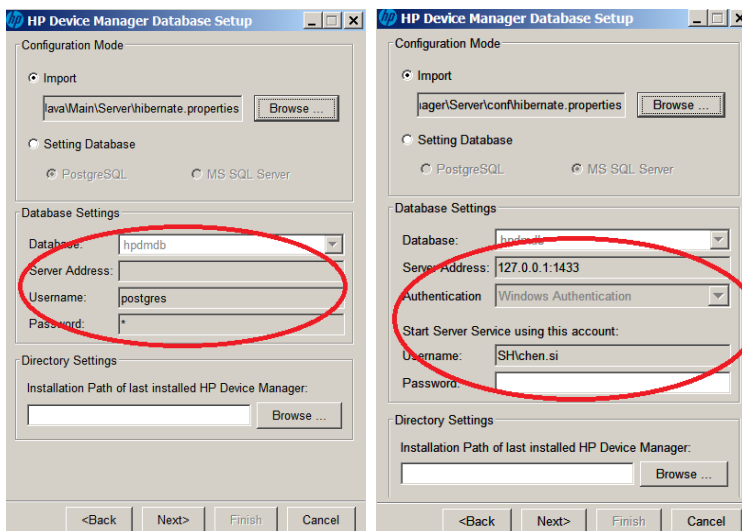
- 4. Go to the HPDM directory .../Server/conf, select the **hibernate.properties** file, and then click **Open**.



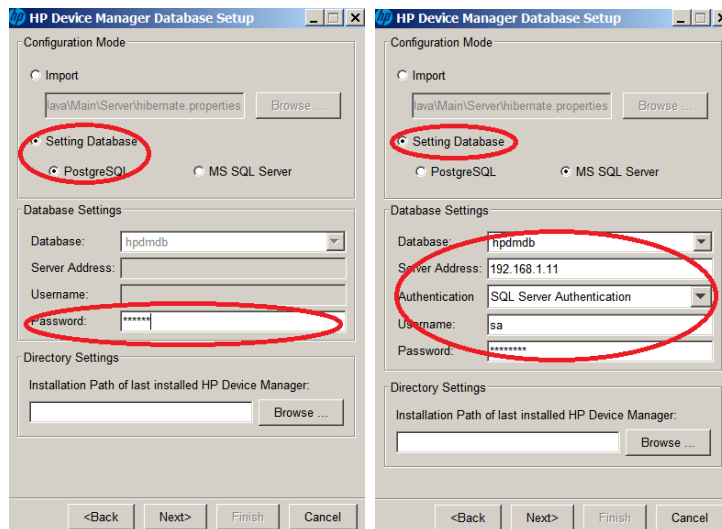
- A. If the existing database is PostgreSQL with a default password, a dialog prompts you to set new password for PostgreSQL. Enter your **Password**, enter the same password in **Confirm Password**, and then select **OK**.



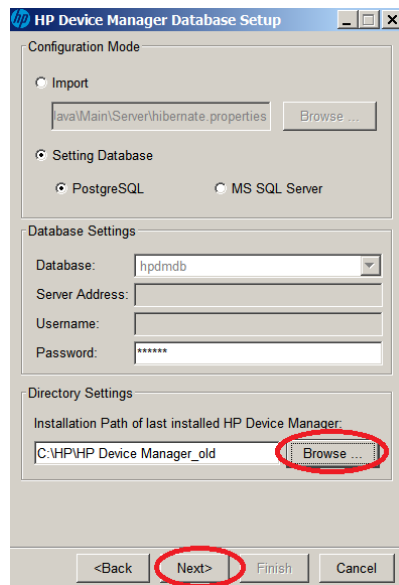
After you reset your password, the database information automatically populates the Database Settings fields.



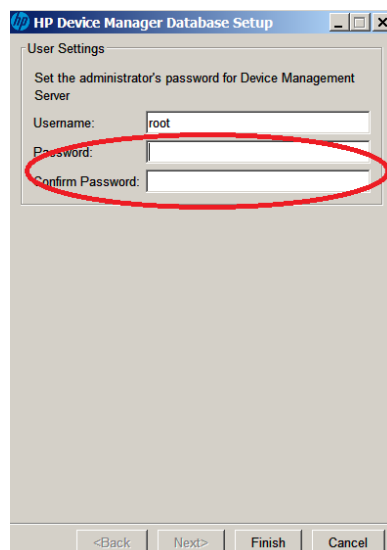
- B. If you need to enter the Database Settings information manually, select **Setting Database**, select the database type, and then enter the database information under **Database Settings**.



5. Click **Browse**, select the installation path of the last installed HPDM, and then click **Next**.



6. Enter and confirm the password for the root Administrator account, and then click **Finish**.

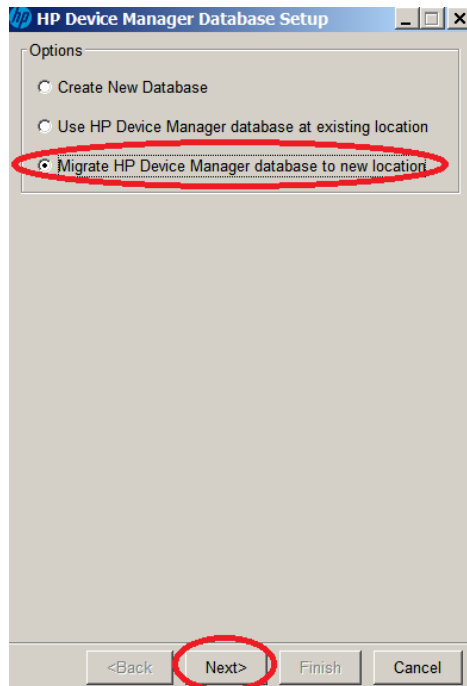


7. Click **OK**. The existing database is now being used.
8. After the database installation is finished, a completion dialog appears. Click **Finish**.
You have completed the HPDM update.

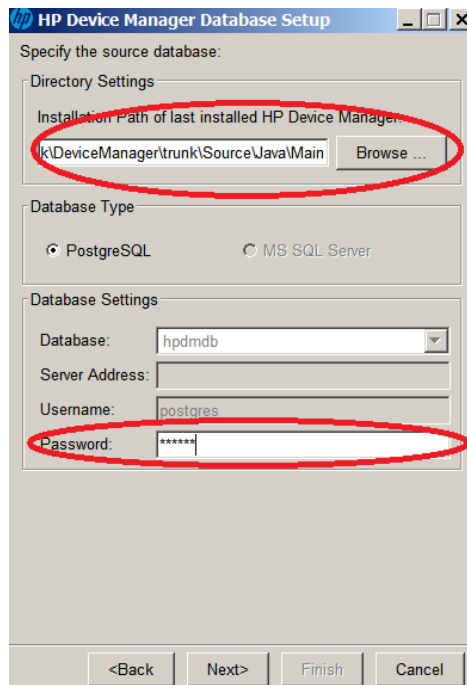
Migrate an existing database to a new location

If you choose **Migrate HP Device Manager database to new location**, do the following:

1. Select **Migrate HP Device Manager database to new location**, then click **Next**.



2. Specify the source database. Select the last installed HPDM directory, choose the database type, and then the database settings (stored in a hibernate.properties file), except for the password, are automatically loaded into Database Settings.



3. Enter your password.

If the previously installed version of HPDM is lower than 4.7 and the source database type is PostgreSQL, then the password is also automatically loaded.

The screenshot shows the 'HP Device Manager Database Setup' dialog box. The title bar includes the HP logo and the text 'HP Device Manager Database Setup'. The main content area is titled 'Specify the source database:'. It contains three sections: 'Directory Settings' with a text box for 'Installation Path of last installed HP Device Manager:' containing 'k:\DeviceManager\trunk\Source\Java\Main' and a 'Browse...' button; 'Database Type' with radio buttons for 'PostgreSQL' (selected) and 'MS SQL Server'; and 'Database Settings' with fields for 'Database:' (dropdown menu showing 'hpdmdb'), 'Server Address:', 'Username:' (text box with 'postgres'), and 'Password:' (text box with asterisks). At the bottom are buttons for '<Back', 'Next>', 'Finish', and 'Cancel'.

4. Click **Next**.

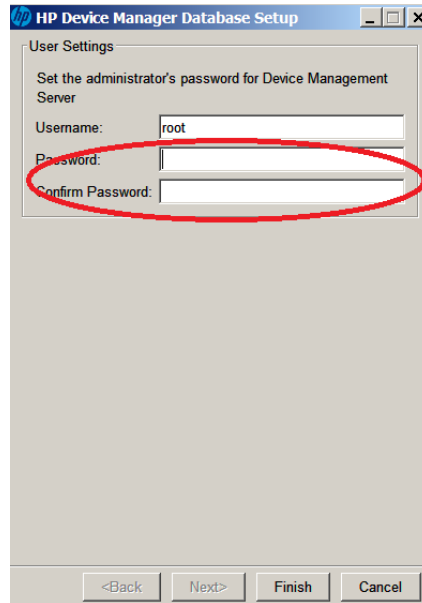
5. Specify the destination database, choose the database type, and then click **Next**. The following example uses MS SQL Server.

The screenshot shows the 'HP Device Manager Database Setup' dialog box. The title bar includes the HP logo and the text 'HP Device Manager Database Setup'. The main content area is titled 'Specify the destination database:'. It contains two sections: 'Database Type' with radio buttons for 'PostgreSQL' and 'MS SQL Server' (selected); and 'Database Settings' with fields for 'Database:' (dropdown menu showing 'hpdmdb'), 'Server Address:' (text box with '192.168.22.12'), 'Authentication:' (dropdown menu showing 'SQL Server Authentication'), 'Username:' (text box with 'sa'), and 'Password:' (text box with asterisks). A red oval highlights the 'Server Address', 'Authentication', 'Username', and 'Password' fields. At the bottom are buttons for '<Back', 'Next>', 'Finish', and 'Cancel'.

Note

The source database and destination database cannot both be PostgreSQL.

- After the database is migrated, enter and confirm the password for the root Administrator account, and then click **Finish**.



- Click **OK**. The database is now migrated.

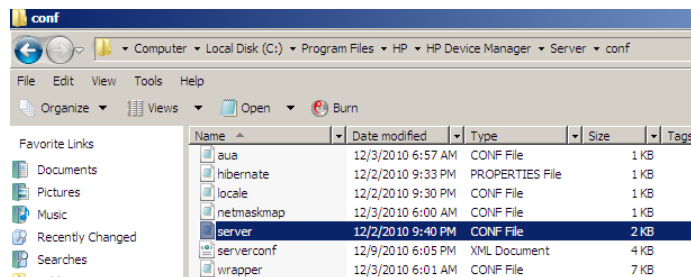
HPDM tools

Configuring the HPDM Server

This section explains each parameter in the HPDM Server configuration file.

Accessing the Server configuration file

- Open the file explorer and find the installation folder for HPDM.



- Right-click the file `server.conf`, select **Open With**, and then select **Notepad**.

Now you have a Notepad file displaying the content of `server.conf`, and you can modify some of the parameters in it.

Thread settings

The HPDM Server creates a thread pool to contain all services.

Parameter	Description
<code>hpdm.thread.poolSize=400</code>	This parameter indicates the maximum amount of thread used by the HPDM Server. The default value is 400.
<code>hpdm.thread.maxNum.task=100</code>	This parameter indicates the maximum amount of thread for tasks.
<code>hpdm.thread.maxNum.report=200</code>	This parameter indicates the maximum amount of thread for processing reports.
<code>hpdm.thread.maxNum.gatewayWalker=20</code>	This parameter indicates the maximum amount of thread for walking HPDM Gateways.

Port settings

The following ports are used to communicate with the HPDM Gateway.

Parameter	Description
<code>hpdm.poll.port=40000</code>	This parameter indicates the port that the HPDM Server uses to poll an HPDM Gateway.
<code>hpdm.task.port=40003</code>	This parameter indicates the port that the HPDM Server uses to send tasks to an HPDM Gateway.
<code>hpdm.report.port=40005</code>	This parameter indicates the port that the HPDM Server uses to receive reports from an HPDM Gateway.

Poll settings

The HPDM Server can be set to poll HPDM Gateways periodically and to refresh their status with the polling results.

Parameter	Description
<code>hpdm.poll.enabled=false</code>	This parameter indicates whether the HPDM Server needs to poll the HPDM Gateways periodically.
<code>hpdm.poll.batchNumber=10</code>	This parameter indicates how many HPDM Gateways to poll at a time. This takes effect only if <code>poll.enabled</code> is set to true.
<code>hpdm.poll.batchInterval=60</code>	This parameter indicates how long in seconds the HPDM Server should wait before polling another batch of HPDM Gateways. This takes effect only if <code>poll.enabled</code> is set to true and the total HPDM Gateway amount is larger than <code>poll.batchNumber</code> .
<code>hpdm.poll.roundInterval=600</code>	This parameter indicates how long in seconds the HPDM Server should wait before starting a new round of HPDM Gateway polling. This takes effect only if <code>poll.enabled</code> is set to true.
<code>hpdm.poll.retryTimes=5</code>	This parameter indicates how many times the HPDM Server should retry when failing to connect to an HPDM Gateway when polling it. This takes effect only if <code>poll.enabled</code> is set to true.
<code>hpdm.poll.retryInterval=180</code>	This parameter indicates how long in seconds the HPDM Server should wait before retrying polling an HPDM Gateway when the last connection failed. This takes effect only if <code>poll.enabled</code> is set to true.

Task settings

Parameter	Description
<code>hpdm.task.SSL.enabled=true</code>	This parameter indicates whether the HPDM Server sends a task to an HPDM Gateway with SSL-encrypted communication. Available values are true and false.
<code>hpdm.task.retry=true</code>	This parameter indicates whether the HPDM Server retries when failing to send a task to HPDM Gateway. If set to false, the HPDM Server drops the task and mark it as a failure.
<code>hpdm.task.retryInterval=60</code>	This parameter indicates how long in seconds the HPDM Server retries sending tasks. It only takes effect when <code>hpdm.task.retry</code> is set to true.

SSL settings

Parameter	Description
<code>hpdm.ssl.downwardcompatible=false</code>	This parameter indicates whether the SSL protocol HPDM Server employs is backward compatible or not. Available values are true and false.

Log settings

The HPDM Server outputs logs to a rolling file named `hpdm-server.log`.

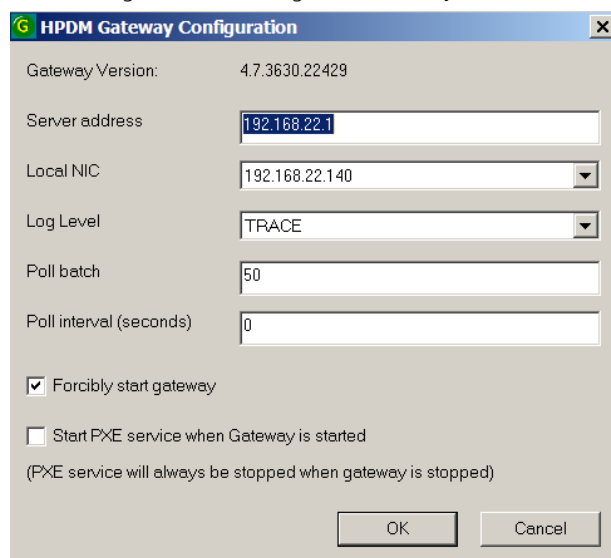
Parameter	Description
<code>hpdm.log.level=WARN</code>	This parameter indicates the log levels to write into the log file. The log levels in the HPDM Server are: DEBUG = 1: Logs for developer debugging. INFO = 2: Logs of running information, not errors. WARN = 3: Logs with warning if something unexpected happened. FATAL = 4: Logs of fatal errors or what must be logged, such as server start. Setting the log level makes the HPDM Server write specified logs of no lower than the specified level to the log file. For example, when setting the log level to INFO, the HPDM Server writes INFO, WARN, and FATAL logs after the next start.
<code>hpdm.log.dailyRolling=false</code>	This parameter specifies whether the log is appended with a daily rolling. If set to true, the following two configurations (<code>hpdm.log.maxBackupIndex</code> and <code>hpdm.log.maxFileSize</code>) are ignored.
<code>hpdm.log.maxBackupIndex=10</code>	This parameter indicates the maximum number of log files the HPDM Server keeps.
<code>hpdm.log.maxFileSize=5MB</code>	This parameter indicates the maximum size of each log file.
<code>hpdm.log.gateway=false</code>	This parameter indicates whether the HPDM Server should write logs about communicating with an HPDM Gateway.
<code>hpdm.log.console=false</code>	This parameter indicates whether the HPDM Server should write logs about communicating with the HPDM Console.
<code>hpdm.log.task=false</code>	This parameter indicates whether the HPDM Server should write logs about tasks.
<code>hpdm.log.taskQueueInterval</code>	This parameter indicates how often (in seconds) the HPDM Server writes a log about the tasks in the queue. Set to 0 to disable the HPDM Servers from writing logs about tasks.
<code>hpdm.log.db=false</code>	This parameter indicates whether the HPDM Server should write logs about database operations.
<code>hpdm.log.masterController</code>	This parameter indicates whether the HPDM Server should write logs about communication with the Master Controller.
<code>hpdm.log.audit</code>	This parameter indicates whether the HPDM Server should write logs about auditing the HPDM Console. Set to true to write HPDM Console logon information to log, set to false to not write auditing information, and set to all to write every HPDM Console request to log.
<code>hpdm.log.auditFile</code>	This parameter indicates the location of the auditing file log.
<code>hpdm.hibernate.debug</code>	This parameter indicates whether the HPDM Server should write logs about advanced database query details.

Cache settings

Parameter	Description
<code>hpdm.cache.enabled=true</code>	This parameter indicates whether the HPDM Server should keep a cache in memory to speed up its reaction to HPDM Consoles.

Configuring the HPDM Gateway

1. After the HPDM Gateway is installed, its tray icon is displayed in the system taskbar. Right-click the icon, and then select Configure Device Management Gateway. The HPDM Gateway Configuration window opens.



2. Move the mouse over the input field of any item and, after a moment, a hint is displayed. Every hint includes two parts:
 - Value scope
 - Explanation of the itemConfigure the settings as desired, using the hints.
3. After the settings are configured, click **OK** to save them. A prompt to restart the HPDM Gateway appears.
4. Click **OK** to exit the HPDM Gateway Configuration window. Restart the HPDM Gateway for changes to take effect.

HPDM Gateway parameters

- **Server address**—Indicates the HPDM Server address.
- **Local NIC**—Indicates the network card for an HPDM Gateway to send and receive tasks and reports.
- **Log Level**—Indicates the log level for the HPDM Gateway log file.
- **Poll batch**—Indicates the number of HPDM Agents that are polled by HPDM Gateway in a batch.
- **Poll interval**—Indicates the interval in seconds between polling HPDM Agents.
- **Forcibly start gateway**—Forcibly starts the HPDM Gateway even if another HPDM Gateway is on the same subnet.
- **Start PXE service when Gateway is started**—Set to Yes to capture/deploy images with PXE

HPDM Gateway tray icon colors

- **Green**—HPDM Gateway is running.
- **Yellow**—HPDM Gateway is stopping or starting.
- **Red**—HPDM Gateway is stopped.
- **Red & Yellow**—HPDM Gateway has found another HPDM Gateway running on the same subnet.

HPDM Gateway tray icon menu

- **Start Device Management Gateway**—Starts HPDM Gateway.
- **Stop Device Management Gateway**—Stops HPDM Gateway.
- **Configure Device Management Gateway**—Opens the HPDM Gateway Configuration window.
- **Forcibly Start Device Management Gateway**—Forcibly starts HPDM Gateway.
- **Restart Device Management Gateway**—Restarts HPDM Gateway.
- **Exit**—Exits the HPDM Gateway control program, which means the tray icon is no longer be shown.

Configuring DHCP tags

For information about configuring DHCP tags, see the *HP Device Manager 4.7 Configuring DHCP Tags* white paper.

Configuring the HPDM Agent

Configuring HP WES/XPe/CE clients

1. Log on to the device as Administrator.
2. Open the Control Panel and double-click **HPDM Agent**. The Configure HP Device Management Agent dialog appears.



There are two tabs in this dialog. The General tab contains all parameters for HPDM Agent settings. The Groups tab is used to set special grouping information for HPDM Console and HPDM Server use.

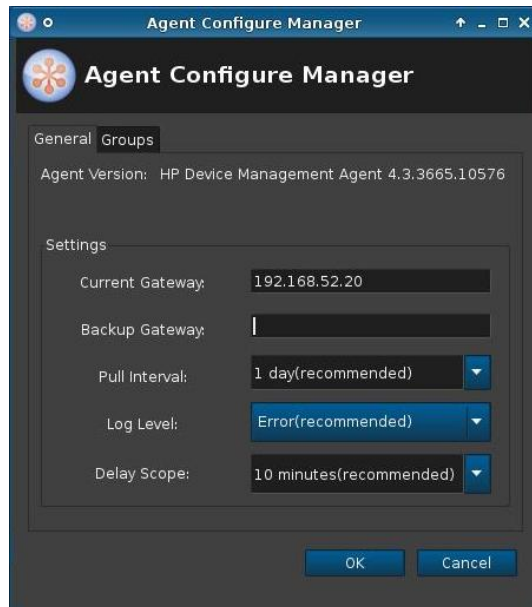


There are two options in the Groups tab. Select **Get Pre-Assign Groups from DHCP Tag** to make the HPDM Agent report with grouping values to get from the DHCP server. Select **Use Static Custom Groups** to set custom grouping values manually.

To set the grouping values manually, select **Use Static Custom Groups** and then click **Add**. Enter the grouping value in the dialog that opens. You can choose the **Group Name** from a drop-down list and enter a value for it.

Configuring HP ThinPro and Debian clients

1. Log on to the device as Administrator.
2. Open the **Control Panel**, select the **Management** tab, and double-click **HPDM Agent**. The Agent Configure Manager dialog opens.



There are two tabs in this dialog. The General tab contains all parameters for HPDM Agent settings. The Groups tab is used to set special grouping information for HPDM Console and HPDM Server use.



There are two options in the Groups tab. Select **Get Pre-Assign Groups from DHCP Tag** to make the HPDM Agent report with grouping values to get from the DHCP server. Select **Use Static Custom Groups** to set custom grouping values manually.

To set the grouping values manually, select **Use Static Custom Groups** and then click **Add**. Enter the grouping value in the dialog that opens. You can choose the **Group Name** from a drop-down list and enter a value for it.

HPDM Agent parameters

Although the GUIs differ a little between Windows and Linux, their parameters are the same. The following are explanations for each parameter.

- **Agent Version**—Indicates the current version of HPDM Agent.
- **Current Gateway**—Indicates the IP address of the HPDM Gateway that is currently managing this HPDM Agent. You can change this value to make the HPDM Agent report to another HPDM Gateway with either an IP address or a hostname. The HPDM Agent refreshes this value into a valid IP address every time it receives a task from an active HPDM Gateway.
- **Backup Gateway**—Indicates the IP address of a backup HPDM Gateway. The HPDM Agent tries to find an HPDM Gateway to work with on startup. If the current HPDM Gateway is not available, the HPDM Agent attempts to connect to the backup HPDM Gateway.
- **Pull Interval**—Indicates the time interval that the HPDM Agent connects to the HPDM Gateway and asks for a task. Normally, tasks are pushed from the HPDM Gateway to the HPDM Agent when the HPDM Gateway gets a task. Sometimes the HPDM Agent is running on a device behind NAT, which means that the HPDM Gateway has no approach to connect to the HPDM Agent. Tasks for devices behind NAT can only be executed after the HPDM Agent establishes a connection to the HPDM Gateway and pulls tasks from the HPDM Gateway.
- **Log Level**—Indicates which log levels should be written into the log file. When set at a particular level, errors of that level and higher are logged. There are three levels for HPDM Agent: INFORMATION, WARNING, and ERROR (from low to high). See the *HP Device Manager 4.7 Administrator Guide* for more details about logging.
- **Delay Scope**—Indicates a time range during which the HPDM Agent sends a startup report to the HPDM Gateway after startup. The HPDM Agent randomly selects a time in that range and sends a startup report. This avoids net traffic peak. For example, suppose there are 100 devices. All of them have Delay Scope set to 10 minutes, and you send a reboot task to them all. The 100 devices all reboot, and then their HPDM Agents start. They do not report in at the 10th minute after that. Each of them uses a random time between 0–10 minutes. So, all 100 devices report within 10 minutes, avoiding net traffic peak.
- **Get Pre-Assign Groups from DHCP Tag**—Makes the Agent report with grouping values to get from the DHCP server. See [Configuring DHCP tags](#) for information on how to set grouping values on a DHCP server for HPDM.
- **Use Static Custom Groups**—Allows you to set custom grouping values for this device manually. The Agent ignores values from the DHCP server and reports the custom settings.
- **Group Name**—Indicates the group. There are seven fields to choose from. You can set some or all of them.
- **Value**—Indicates the grouping value for the specified file.

Appendix A — Updating your HPDM version

This section describes how to update HPDM from the current version to the latest version.

Updating HPDM to the latest major version

For example, the latest major version is HPDM 4.7. There are the following paths to update HPDM to 4.7.

To update HPDM from 4.6 or 4.6 S SPs to 4.7:

1. You can install HPDM 4.7 without installing the HPDM 4.6 SPs first. For example, you can update HPDM 4.6 SP1 to HPDM 4.7 without installing HPDM 4.6 SP2.

To update HPDM from 4.4 to 4.7:

1. Install HPDM 4.5, and then install HPDM 4.7.

Updating HPDM to the latest SP

The following example uses HPDM 4.6 SP3

To update HPDM 4.6 to 4.6 SP3, use one of the following paths:

- Update HPDM 4.6 or 4.6 SP1 to 4.6 SP3.
 - A. Install HPDM 4.6 SP3 without installing lower service packs such as HPDM 4.6 SP2.
- Update HPDM 4.5 or 4.5 SPs to 4.6 SP3.
 - A. Install HPDM 4.6, and then install HPDM 4.6 SP3.
- Update HPDM 4.4 to 4.6 SP3.
 - A. Install HPDM 4.5.
 - B. Then, install HPDM 4.6.
 - C. Finally, install HPDM 4.6 SP3.

For more information

To read more about HP Device Manager, go to hp.com/go/hpdm.

Sign up for updates

hp.com/go/getupdated

© Copyright 2015 HP Development Company, L.P.

ARM is a registered trademark of ARM Limited. Java is a registered trademark of Oracle and/or its affiliates. Linux is the registered trademark of Linus Torvalds in the U.S. and other countries. Microsoft, Windows, and Windows Server are either registered trademarks or trademarks of Microsoft Corporation in the United States and/or other countries. Pentium is a trademark of Intel Corporation in the U.S. and other countries.

Confidential computer software. Valid license from HP required for possession, use or copying. Consistent with FAR 12.211 and 12.212, Commercial Computer Software, Computer Software Documentation, and Technical Data for Commercial Items are licensed to the U.S. Government under vendor's standard commercial license.

The information contained herein is subject to change without notice. The only warranties for HP products and services are set forth in the express warranty statements accompanying such products and services. Nothing herein should be construed as constituting an additional warranty. HP shall not be liable for technical or editorial errors or omissions contained herein.

First Edition: October 2015

